

Factors associated with deep sternal wound infection after open-heart surgery in a Danish registry

Gundestrup, Lisa; Florczak, Christoffer Koch; Riber, Lars Peter Schødt

Published in:
American Heart Journal Plus: Cardiology Research and Practice

DOI:
10.1016/j.ahjo.2023.100307

Publication date:
2023

Document version:
Final published version

Document license:
CC BY-NC-ND

Citation for polished version (APA):
Gundestrup, L., Florczak, C. K., & Riber, L. P. S. (2023). Factors associated with deep sternal wound infection after open-heart surgery in a Danish registry. *American Heart Journal Plus: Cardiology Research and Practice*, 31, Article 100307. <https://doi.org/10.1016/j.ahjo.2023.100307>

Go to publication entry in University of Southern Denmark's Research Portal

Terms of use

This work is brought to you by the University of Southern Denmark.
Unless otherwise specified it has been shared according to the terms for self-archiving.
If no other license is stated, these terms apply:

- You may download this work for personal use only.
- You may not further distribute the material or use it for any profit-making activity or commercial gain
- You may freely distribute the URL identifying this open access version

If you believe that this document breaches copyright please contact us providing details and we will investigate your claim.
Please direct all enquiries to puresupport@bib.sdu.dk



Contents lists available at ScienceDirect

American Heart Journal Plus: Cardiology Research and Practice

journal homepage: www.sciencedirect.com/journal/american-heart-journal-plus-cardiology-research-and-practice



Research Paper

Factors associated with deep sternal wound infection after open-heart surgery in a Danish registry

Lisa Gundestrup^{a,*}, Christoffer Koch Florczak^b, Lars Peter Schødt Riber^a

^a Department of Cardiothoracic and Vascular Surgery, Cardiac section, Odense University Hospital, J.B. Winsløvs Vej 4, Penthouse 2 sal, 5000 Odense, Denmark

^b Department of Politics and Society, Aalborg University, Fibigerstræde 1, 28 9220 Aalborg Ø, Denmark

ARTICLE INFO

Keywords:

Mediastinitis
Deep sternal wound infection
Open-heart surgery
Risk factors

ABSTRACT

Objective: To conduct a comprehensive multivariate analysis of variables associated with deep sternal wound infection, after open-heart surgery via median sternotomy.

Method: A retrospective cohort of all adult patients, who underwent open-heart surgery at Odense University Hospital between 01-01-2000 and 31-12-2020 was extracted from the West Danish Heart Registry. Data were analyzed using maximum likelihood logistic regression.

Results: A total of 15,424 patients underwent open-heart surgery and 244 developed a deep sternal wound infection, equivalent to 1,58 %. After data review 11,182 entries were included in the final analysis, of which 189 developed DSWI, equivalent to 1,69 %. Multivariate analysis found the following variables to be associated with the development of deep sternal wound infection (odds ratios and 95% confidence intervals in parentheses): Known arrhythmia (1.70; 1.16–2.44), Left Ventricular Ejection Fraction (1.66; 1.02–2.58), Body Mass Index 25–30 (1.66; 1.12–2.52), Body Mass Index 30–35 (2.35; 1.50–3.71), Body Mass Index 35–40 (3.61; 2.01–6.33), Body Mass Index 40+ (3.70; 1.03–10.20), Age 60–69 (1.64; 1.04–2.67), Age 70–79 (1.95; 1.23–3.19), Chronic Obstructive Pulmonary Disease (1.77; 1.21–2.54), Reoperation (1.63; 1.06–2.45), Blood transfusion in surgery (1.09; 1.01–1.17), Blood transfusion in intensive care unit (1.03; 1.01–1.06), Known peripheral atherosclerosis (1.82; 1.25–2.61), Current smoking (1.69; 1.20–2.35), Duration of intubation (1.33; 1.12–1.57).

Conclusion: Increased risk of deep sternal wound infection after open-heart surgery is a multifactorial problem, while some variables are unchangeable others are not. Focus should be on optimizing the condition of the patient prior to surgery e.g. weight loss and smoking. But also factors surrounding the patient e.g. preventing blood loss and minimizing intubation time.

1. Introduction

Deep sternal wound infections (DSWI) continue to be one of the most dreaded complications after median sternotomy in relation to open-heart surgery (OHS). Previously reported with mortality rates ranging between 14 and 30 % and prolonged in hospital stay [1–5]. Though, after the introduction of Vacuum Assisted Closure (VAC) and improved management of patients with DSWI, mortality rates have decreased to around 3–12 % [6,7]. However, the rate of DSWI after OHS have remained relatively unchanged during the last 30 years at 0,2–2,3 % [1,2,5,6,8–14]. This is probably not a sign of lack of improvement of

patients care, but rather due to the fact, that patients referred to surgery have more comorbidities, are older and more complicated than earlier [15].

Several studies have sought to identify risk factors related to the development of DSWI after OHS. Amongst the identified risk factors are Chronic Obstructive Pulmonary Disease (COPD), diabetes, Body mass index (BMI), reoperation for bleeding and procedure type [2,8,10,11,13]. Other factors found to be associated with increased risk of DSWI are prolonged cardio pulmonary bypass (CPB) time, previous heart surgery, hypertension, male gender, mechanical ventilation over 72 h, age, transfusions, NYHA class and peripheral vascular disease

Abbreviations: DSWI, deep sternal wound infections; OHS, open-heart surgery; VAC, vacuum assisted closure; COPD, chronic obstructive pulmonary disease; BMI, body mass index; CPB, cardiopulmonary bypass; CABG, coronary artery bypass grafting; AVR, aortic valve replacement; WDHR, The West Danish Heart Registry; CI, confidence intervals; ECC, extracorporeal circulation; OR, odds ratio.

* Corresponding author at: Department of Cardiothoracic and Vascular Surgery, Penthouse 2sal Odense University Hospital, J. B. Winsløvs 4, Odense C, Denmark.

E-mail addresses: Lisa.gundestrup@rsyd.dk (L. Gundestrup), ckfl@dps.aau.dk (C.K. Florczak), Lars.riber@rsyd.dk (L.P.S. Riber).

<https://doi.org/10.1016/j.ahjo.2023.100307>

Received 15 February 2023; Accepted 2 June 2023

Available online 6 June 2023

2666-6022/© 2023 The Authors. Published by Elsevier Inc. This is an open access article under the CC BY-NC-ND license (<http://creativecommons.org/licenses/by-nc-nd/4.0/>).

[1,9,12,14]. The aim of this study was to investigate risk factors associated with the development of DSWI in a cohort of patients that have undergone OHS at Odense University Hospital, Denmark (OUH). In previous studies, the number of included patients have often been small resulting in a low number of patients with DSWI, leading to limitations in the statistical analysis. Furthermore, studies have often concentrated on one procedure type, for example coronary artery bypass grafting (CABG) or aortic valve replacement (AVR). In this study we have included a historically large cohort, comprised of all the surgeries performed at our department, and with-in this a reasonably large number of patients with DSWI. This allows us to conduct a more comprehensive multivariate analysis, which prior studies are in lack of.

2. Patients and method

2.1. Study design

This study was performed as a retrospective cohort study with data extracted from The West Danish Heart Registry (WDHR). This registry holds data on every patient that has undergone open-heart surgery in the Region of Western Denmark.

The extracted data include all adult patients (≥ 18 years) who underwent OHS at the Department of Cardiothoracic and Vascular surgery at OUH between 01-01-2000 and 31-12-2020. Surgery types primarily comprised CABG and AVR, but also included procedures such as mitral- and tricuspid-valve surgeries, double- and triple procedures, surgery for aortic dissections, tumor removals and traumatic cardiac injuries amongst others. To be defined as having a DSWI the patients had to have undergone re-sternotomy with verified bacterial growth in cultures from the mediastinum. To make sure all patients with a DSWI was registered correctly, the database was controlled against the ICD-10 codes for DSWI in the electronic patient journal and when discrepancies was detected the electronic journal was reviewed to confirm or deny a DSWI. Variables for the statistical analysis of risk factors were chosen based on previous literature review.

2.2. Statistical analysis

Data were analyzed using maximum likelihood logistic regression and prior to analysis data was reviewed in regards to missing and outlying values. Errors in the database documentation were evaluated and if an obvious correction was not possible, the entry was removed from the dataset. Univariate analysis was performed for each variable before selecting variables for multivariate analysis. Multicollinearity was tested when appropriate and linearity of the numerical variables were tested, and log transformation applied when deemed necessary. Furthermore, data were tested for outliers and a multivariate regression without the outliers was performed to evaluate the effect of the outliers on the statistical outcome.

Data are presented as odds ratios and 95 % confidence intervals (CI). A p -value of 0,05 was regarded as significant. The statistical analysis was performed using CRAN R Version 4.0.3.

3. Results

A total of 15,424 adult patients underwent OHS at OUH, between 01-01-2000 and 31-12-2020. DSWI developed postoperatively in 244 patients, equivalent to 1,58 %. To calculate incidence development over time, patients from the total cohort were subdivided into 4 groups, with 5 year intervals according to surgery date, 319 patient were excluded due to missing data. Calculations showed a significant increase in the incidence of DSWI over time for the groups 2010–2014 ($p = 0,005$) and 2015–2020 ($p = 0,012$) see Table 1. After exclusion of missing values and unreliable entries, a total of 11,182 entries were included in the final analysis, of which 189 developed DSWI, equivalent to 1,69 %.

The patient characteristics and the results of the univariate analysis

Table 1

Incidence of DSWI in the total cohort.

| Year interval | No DSWI (n = 14,861) | DSWI (n = 244) | Incidents | p-Value |
|---------------|----------------------|----------------|-----------|---------|
| 2000–2004 | 3580 | 42 | 1.12 % | |
| 2005–2009 | 2955 | 40 | 1.34 % | 0.51987 |
| 2010–2014 | 3876 | 78 | 1.97 % | 0.00513 |
| 2015–2020 | 4450 | 84 | 1.85 % | 0.01245 |

can be found in Table 2. A total of 17 variables from the univariate analysis showed association with the development of DSWI. The variables from the univariate analysis can be divided into three categories:

Baseline factors; Treatment for high cholesterol ($p = 0.0064$), treatment for high blood pressure ($p = 0.0196$), diabetes ($p = 2.4E-05$), COPD ($p = 1.85E-06$), smoking ($p = 0.002$), LVEF <30 % ($p = 5.75E-05$), Known arrhythmia ($p = 5.68E-5$), BMI(25–30: $p = 0.03$, 30–35: $p = 0.0003$, 35–40: $p = 3.04E-07$, >40 : $p = 0.01$), Gender ($p = 0.61$), Age(60–69: $p = 0.02$, 70–79: $p = 0.001$, >80 : $p = 0.79$), known peripheral atherosclerosis ($p = 3.2E-09$), Active endocarditis ($p = 0.72$), and previous OHS ($p = 0.0001$).

Intraoperative factors; Blood transfusion during surgery ($p = 3.32E-09$), CABG ($p = 0.01$), AVR ($p = 0.50$) and ECC time ($p = 1,11E-07$).

And postoperative factors; Reoperation ($p = 6.23E-8$), Blood transfusion in intensive care unit ($p = 1.67E-12$) and Duration of intubation ($p = 6.9E-15$).

From the univariate analysis, variables with p -values <0.05 were chosen for the multivariate analysis. Results of the analysis can be seen in Table 3. In the multivariate analysis 11 variables showed association with the development of DSWI; Known arrhythmia (OR = 1.70; CI:1.68–2.44), Left Ventricular Ejection Fraction (OR = 1.66; CI:1.02–2.58), Body Mass Index 25–30 (OR = 1.66; CI:1.12–2.52), Body Mass Index 30–35 (OR = 2.35; CI:1.50–3.71), Body Mass Index 35–40 (OR = 3.61; CI:2.01–6.33), Body Mass Index 40+ (OR = 3.70; CI:1.03–10.20), Age 60–69 (OR = 1.64; CI:1.04–2.67), Age 70–79 (OR = 1.95; CI:1.23–3.19), Chronic Obstructive Pulmonary Disease (OR = 1.77; CI:1.21–2.54), Reoperation (OR = 1.63; CI:1.06–2.45), Blood transfusion in surgery (OR = 1.09; CI:1.01–1.17), Blood transfusion in intensive care unit (OR = 1.03; CI:1.01–1.06), Known peripheral atherosclerosis (OR = 1.82; CI:1.25–2.61), Current smoking (OR = 1.69; CI:1.20–2.35) and Duration of intubation (OR = 1.33; CI:1.12–1.57). Variables that no longer showed association consists of; treatment for high cholesterol (OR = 1.26; CI:0.85–1.81), treatment for high blood pressure (OR = 1.02; CI:0.74–1.43), diabetes (OR = 1.40; CI:0.95–1.97), age 80+ years (OR = 1.42; CI:0.58–3.12), ECC time (OR = 0.88; CI:0.63–1.35), CABG (OR = 1.29; CI:0.90–1.88), and previous open-heart surgery (OR = 1.29; CI:0.85–1.92).

A test for outliers revealed 41 outliers with possible influence on the analysis. These were removed from the dataset and a new multivariate analysis was performed on a dataset with a total of 11,141 patients and 148 cases of DSWI. This analysis was performed to evaluate the influence of outliers on the results of the multivariate analysis. When comparing the results from the two multivariate analysis we found that diabetes was now a significant risk factor after removal of outliers, with OR = 1.55 and CI:1.05–2.26, all other variables remained unchanged in terms of significance after the removal of outliers.

To evaluate the difference in survival between patient with and without DSWI Kaplan Meier plot was produced and can be seen in Fig. 1. A log-rank-test was performed, and it showed a significant difference ($p = 1^{-15}$) in survival in the two groups.

Next patients were divided into two new groups according to the type of surgery they underwent.

The two groups were comprised of patients who underwent either a surgery that included a CABG or a non-CABG surgery. The incidence of DSWI in the two groups can be found in Table 4. Multivariate analyses were performed on the two groups with a reduces number of variables.

Table 2
Univariate analyses of risk factors for deep sternal wound infection.

| Variable | Category | No DSWI (n = 10,993) | DSWI (n = 189) | p-value |
|--|--|----------------------|----------------|----------|
| Treatment for high Cholesterol | No | 4401(40 %) | 57(30.2 %) | 0.0064 |
| | Yes | 6592(60 %) | 132(69.8 %) | |
| Treatment for high blood pressure | No | 4717(42.9 %) | 65(34.4 %) | 0.0196 |
| | Yes | 6276(57.1 %) | 124(65.6 %) | |
| Diabetes | No | 9154(83.3 %) | 135(71.4 %) | 2.4E-05 |
| | Yes | 1839(16.7 %) | 54(28.6 %) | |
| Known arrhythmia ^a | No | 9512(86.5 %) | 144(76.2 %) | 5.68E-05 |
| | Yes | 1481(13.5 %) | 45(23.8 %) | |
| LVEF ^b | >30 % | 10,376(94.4 %) | 165(87.3 %) | 5.75E-05 |
| | <30 % | 617(5.6 %) | 24(12.7 %) | |
| BMI ^c | <25 | 3523(32 %) | 37(19.6 %) | 0.03186 |
| | >25-30 | 4760(43.3 %) | 77(40.7 %) | |
| | >30-35 | 2063(18.8 %) | 48(25.4 %) | |
| | >35-40 | 551(5 %) | 23(12.2 %) | |
| Gender | >40 | 96(0.9 %) | 4(2.1 %) | 0.01019 |
| | Male | 8257(75.1 %) | 145(76.7 %) | 0.612 |
| Age groups (years) | Female | 2736(24.9 %) | 44(23.3 %) | |
| | <60 | 2531(23 %) | 27(14.3 %) | 0.02118 |
| | 60-69 | 3642(33.1 %) | 66(34.9 %) | |
| | 70-79 | 4145(37.7 %) | 88(46.6 %) | |
| >80 | 675(6.2 %) | 8(4.3 %) | | |
| COPD ^d | No | 9834(89.5 %) | 148(78.3 %) | 1.85E-06 |
| | Yes | 1159(10.5 %) | 41(21.7 %) | |
| ECC duration (minutes) ^e | mean | 110.8 | 132.1 | 1.11E-07 |
| | Reoperation ^f | No | 9987(90.8 %) | |
| Reoperation ^f | Yes | 1006(9.2 %) | 40(21.2 %) | 6.23E-08 |
| | Blood transfusion during surgery (liter) | Mean | 0.22 | 0.82 |
| Blood transfusion in intensive care unit (Liter) | Mean | 0.57 | 3.2 | 1.67E-12 |
| CABG ^g | No | 3824(34.8 %) | 50(26.5 %) | 0.0177 |
| | Yes | 7169(65.2 %) | 139(73.5 %) | |
| Aortic valve replacement | No | 7010(63.8 %) | 125(66.1 %) | 0.502 |
| | Yes | 3983(36.2 %) | 64(33.9 %) | |
| Known peripheral atherosclerosis | No | 9925(90.3 %) | 145(76.7 %) | 3.21E-09 |
| | Yes | 1068(9.7 %) | 44(23.3 %) | |
| Current smoking | No | 8601(78.2 %) | 130(68.8 %) | 0.00202 |
| | Yes | 2392(21.8 %) | 59(31.2 %) | |
| Active endocarditis | No | 10,799(98.2 %) | 185(97.9 %) | 0.717 |
| | Yes | 194(1.8 %) | 4(2.1 %) | |

Table 2 (continued)

| Variable | Category | No DSWI (n = 10,993) | DSWI (n = 189) | p-value |
|--------------------------------|----------|----------------------|----------------|----------|
| Previous open-heart surgery | No | 9087(82.7 %) | 136(72 %) | 0.000157 |
| | Yes | 1906(17.3 %) | 53(28 %) | |
| Duration of intubation (hours) | Mean | 18.4 | 97.53 | 6.9E-15 |

^a The dominating arrhythmia type was atrial fibrillation but other types of arrhythmias also occurred.

^b Left ventricular ejection fraction prior to surgery.

^c Body mass index.

^d Chronic obstructive pulmonary disease.

^e Extracorporeal circulation.

^f Acute reoperation caused by bleeding, tamponade, or ischemia.

^g Coronary artery bypass grafting.

Table 3

Multivariate analysis of risk factors for deep sternal wound infection.

| Variable | OR | 95 % CI | p-Value |
|--|--------|----------------|----------|
| Treatment for high cholesterol | 1.2624 | 0.8923-1.8064 | 0.194467 |
| Treatment for high blood pressure | 1.0227 | 0.7377-1.4291 | 0.893875 |
| Diabetes | 1.4023 | 0.9845-1.9731 | 0.056136 |
| Known arrhythmia ^a | 1.7021 | 1.1678-2.4377 | 0.004527 |
| LVEF ^b | 1.6548 | 1.0165-2.5829 | 0.033535 |
| BMI 25-30 ^c | 1.6605 | 1.1157-2.5155 | 0.014170 |
| BMI 30-35 ^c | 2.3455 | 1.4946-3.7103 | 0.000227 |
| BMI 35-40 ^c | 3.6048 | 2.0121-6.3329 | 1.07E-05 |
| BMI 40+ ^c | 3.6993 | 1.0300-10.2016 | 0.022186 |
| Age 60-69 | 1.6396 | 1.0345-2.6711 | 0.040200 |
| Age 70-79 | 1.9521 | 1.2332-3.1849 | 0.005543 |
| Age 80+ | 1.4159 | 0.5809-3.1151 | 0.410829 |
| COPD ^d | 1.7741 | 1.2134-2.5387 | 0.002274 |
| ECC duration (minutes) ^{e,h} | 0.8873 | 0.6340-1.3448 | 0.551874 |
| Reoperation ^f | 1.6308 | 1.0567-2.4493 | 0.022238 |
| Blood transfusion during surgery (liter) | 1.0870 | 1.0086-1.1653 | 0.020501 |
| Blood transfusion in intensive care unit (liter) | 1.0330 | 1.0091-1.0578 | 0.005186 |
| CABG ^g | 1.2860 | 0.8946-1.8754 | 0.182052 |
| Known peripheral atherosclerosis | 1.8226 | 1.2475-2.6137 | 0.001432 |
| Current smoking | 1.6861 | 1.1971-2.3503 | 0.002360 |
| Previous open-heart surgery | 1.2902 | 0.8499-1.9214 | 0.221501 |
| Duration of intubation (hours) ^h | 1.3308 | 1.1159-1.5731 | 0.001087 |

^a The dominating arrhythmia type was Atrial fibrillation but other types of arrhythmias also occurred.

^b Left ventricular ejection fraction prior to surgery.

^c Body mass index.

^d Chronic obstructive pulmonary disease.

^e Extracorporeal circulation.

^f Acute reoperation caused by bleeding, tamponade, or ischemia.

^g Coronary artery bypass grafting,

^h Log transformed.

The results can be found in [Tables 5 and 6](#).

For the CABG group the following significant variables were found; Known arrhythmia (OR = 1.67; CI:1.04-2.59), Body Mass Index 25-30 (OR = 1.99; CI:1.21-3.39), Body Mass Index 30-35 (OR = 3.33; CI:1.95-5.86), Body Mass Index 35-40 (OR = 5.03; CI:2.52-9.93), Age 70-79 (OR = 1.99; CI:1.18-3.49), Chronic Obstructive Pulmonary Disease (OR = 1.81; CI:1.15-2.75), Reoperation (OR = 1.96; CI:1.19-3.14), Known peripheral atherosclerosis (OR = 1.71; CI:1.11-2.57), Current smoking (OR = 1.89; CI:1.28-2.75) and Duration of intubation (OR = 1.35; CI:1.09-1.64).

For the non-CABG group, the following significant variables were found; Body Mass Index >40 (OR = 4.74; CI:0.94-17.6), Blood transfusion in surgery (OR = 1.12; CI:0.99-1.25), Blood transfusion in intensive care unit (OR = 1.06; CI:1.02-1.11), Known peripheral atherosclerosis (OR = 2.57; CI:1.10-5.48).

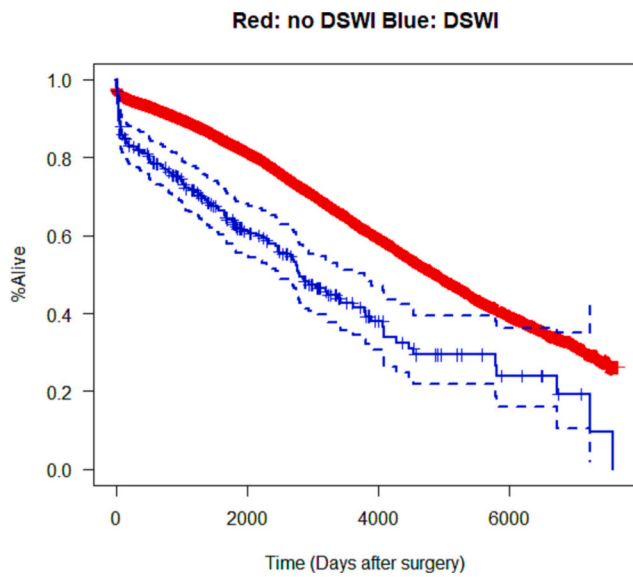


Fig. 1. Kaplan Meier plot of the difference in survival between patients with and without a DSWI.

Table 4
Incidence of infection in patients that have undergone a procedure including a CABG and for patients with a non-CABG procedure.

| Procedure type | No DSWI (n = 10,993) | DSWI (n = 189) | Incidents |
|----------------|----------------------|----------------|-----------|
| CABG+ | 7169 | 139 | 1,90 % |
| Non-CABG | 3824 | 50 | 1,29 % |

Table 5
Multivariate analysis of risk factors for deep sternal wound infection for patients undergoing a procedure that includes CABG.

| Variable | OR | 95 % CI | p-Value |
|--|--------|----------------|----------|
| Diabetes | 14,349 | 0.9715–2.0876 | 0.06358 |
| Known arrhythmia ^a | 1.6731 | 1.0386–2.5999 | 0.02733 |
| LVEF ^b | 1.6605 | 0.9504–2.7526 | 0.06035 |
| BMI 25–30 ^c | 1.9902 | 1.2145–3.3874 | 0.00819 |
| BMI 30–35 ^c | 3.3335 | 1.9501–5.8628 | 1.63E–05 |
| BMI 35–40 ^c | 5.0297 | 2.5189–9.9308 | 3.39E–06 |
| BMI 40+ ^c | 2.1219 | 0.1145–11.0380 | 0.47582 |
| Age 60–69 | 1.5000 | 0.8894–2.6193 | 0.13908 |
| Age 70–79 | 1.9968 | 1.1851–3.4955 | 0.01179 |
| Age 80+ | 1.0984 | 0.3109–3.0315 | 0.86834 |
| COPD ^d | 1.8129 | 1.1596–2.7508 | 0.00676 |
| Reoperation ^e | 1.9644 | 1.1904–3.1357 | 0.00613 |
| Blood transfusion during surgery (liter) | 1.0639 | 0.9620–1.1603 | 0.17145 |
| Blood transfusion in intensive care unit (liter) | 1.0217 | 0.9861–1.0555 | 0.19848 |
| Known peripheral atherosclerosis | 1.7059 | 1.1075–2.5656 | 0.01245 |
| Current smoking | 1.8896 | 1.2835–2.7540 | 0.00106 |
| Duration of intubation (hours) ^f | 1.3526 | 1.0962–1.6485 | 0.00367 |

^a The dominating arrhythmia type was atrial fibrillation but other types of arrhythmias also occurred.
^b Left ventricular ejection fraction prior to surgery.
^c Body mass index.
^d Chronic obstructive pulmonary disease.
^e Acute reoperation caused by bleeding, tamponade, or ischemia.
^f Log transformed.

4. Discussion

The aim of this study was to identify risk factors associated with the development of DSWI after OHS.

Table 6
Multivariate analysis of risk factors for deep sternal wound infection for patients undergoing a non-CABG procedure.

| Variable | OR | 95 % CI | p-Value |
|--|--------|----------------|---------|
| Diabetes | 1.7628 | 0.7831–3.6554 | 0.1455 |
| Known arrhythmia ^a | 1.8514 | 0.9787–3.4181 | 0.0521 |
| LVEF ^b | 1.5764 | 0.5085–3.9162 | 0.3731 |
| BMI 25–30 ^c | 1.2574 | 0.6243–2.5759 | 0.5227 |
| BMI 30–35 ^c | 0.9121 | 0.3336–2.2669 | 0.8487 |
| BMI 35–40 ^c | 1.8669 | 0.5571–5.3151 | 0.2694 |
| BMI 40+ ^c | 4.7403 | 0.9362–17.6042 | 0.0327 |
| Age 60–69 | 2.5432 | 1.0055–7.4340 | 0.0625 |
| Age 70–79 | 2.3268 | 0.9363–6.7799 | 0.0889 |
| Age 80+ | 2.4031 | 0.5777–9.1859 | 0.2006 |
| COPD ^d | 1.7081 | 0.7851–3.4296 | 0.1512 |
| Reoperation ^e | 1.0286 | 0.3826–2.3674 | 0.9510 |
| Blood transfusion during surgery (liter) | 1.1248 | 0.9949–1.2542 | 0.0432 |
| Blood transfusion in intensive care unit (liter) | 1.0564 | 1.0165–1.1132 | 0.0159 |
| Known peripheral atherosclerosis | 2.5741 | 1.1026–5.4816 | 0.0198 |
| Current smoking | 1.0530 | 0.4638–2.1672 | 0.8943 |
| Duration of intubation (hours) ^f | 1.2236 | 0.8793–1.6486 | 0.2062 |

^a The dominating arrhythmia type was atrial fibrillation but other types of arrhythmias also occurred.
^b Left ventricular ejection fraction prior to surgery.
^c Body mass index.
^d Chronic obstructive pulmonary disease.
^e Acute reoperation caused by bleeding, tamponade, or ischemia.
^f Log transformed.

Previous studies have sought to do the same with varying results. The relatively low incidence of DSWI makes it hard to accumulate enough cases to conduct advanced analyses using an observational study design. Furthermore, the nature of DSWI makes it impossible to conduct randomized controlled studies. Studies are therefore mainly based on retrospective cohorts. This specific study was conducted with data drawn from the Western Danish Heart Registry, which composes a potentially big margin for error since data are mostly manually reported, resulting in a risk of errors when entering information into the database. In our study this resulted in a large number of entries having to be removed before analysis, because of missing entries or unreliable data. However, after the careful removal of irregular entries we consider our data of generally high quality, as a previous study evaluated the WDHR and concluded that that the data registry was valid with an overall low error rate and would therefore be well suited for use in epidemiological studies [16].

The majority of the current literature identifies a few significant risk factors in their multivariate analyses, from a large pool of variables, such as diabetes, COPD, obesity, prolonged intubation time, and CABG. In our study, we manage to confirm many of the previously found risk factors in our multivariate analysis of the full cohort, with a total number of 11 risk factors associated to the development of DSWI after OHS. Our excess findings are probably due to our larger number of patients with DSWI in a historically large cohort, making the statistical power of the study greater than previous studies on the subject. Dividing our cohort into subgroups according to procedure-type significantly reduces our statistical power, although we still produce statistically significant results, on some of the known risk factors, the decreasing number of patients in the two groups affects the analysis substantially, increasing our confidence intervals for the significant results, therefore the results should be interpreted with care.

Although, no new associations have been found, our study was able to confirm almost all the previously detected factors in a single heart-surgery population. Only a few earlier detected risk factors were not significant in our study, such as male gender and extracorporeal circulation (ECC) time. This could be due to the fact that these might be indirect risk factors of the patient's risk, since male gender is known to

be associated with both diabetes, COPD and arteriolar arteriosclerosis, while increased ECC-time may be an indirect risk factor for more severe disease in the patient population such as multiprocedural surgeries and endocarditis etc. Therefore, not surprisingly was ECC time a significant risk factor for DSWI in the univariate analysis, while not in the multivariate analysis. Further, prolonged ECC time often results in increased transfusion requirements [17,18], which was found to be a significant risk factor for DSWI in both the univariate and the multivariate analysis. ECC time may therefore present as a confounder in the univariate analysis.

Transfusions, both during and after surgery, were associated with increased risk of DSWI, and since this is a factor that, to some extent, is amendable, it should be a focus point when dealing with patients undergoing OHS. We found an increased risk of DSWI for the age group 60–69 and 70–79 years, but not for the 80+ group. This discrepancy is most likely related to the low number of patients in the 80+ group and we expect that this group would have increased risk of DSWI if the sample size was bigger.

Surprisingly, we initially found no association between diabetes and DSWI in the multivariate analysis even though diabetes is a well-known risk factor for surgical infections [19]. A limitation of this study is the rather large number of outliers that affected the final analysis. A second multivariate analysis was therefore performed to investigate the influence of the outliers on the result. After removal of the outliers the multivariate analysis revealed an association between diabetes and DSWI while all other factors remained unchanged in regard to significance. Therefore, we find that the lack of significance is probably due to suppression by the outliers, and recommend relying on the conclusions of previous studies, that diabetes is a risk factor.

Regarding survival after a DSWI, as expected we see a lower survival rate in patients who have developed a DSWI. The significant difference in survival develops during the first few months after the primary surgery, and then levels out to a point where the two curves develop a parallel trend. Thus, our results suggest, that if a patient survives the initial infection, its complications, and treatment, the survival rate is no different than in patients without a DSWI.

When considering the relative impact for the individual risk factors in the development of DSWI, it is difficult to identify prime movers, due to relatively similar effect sizes and overlapping CI. However, when looking at baseline characteristics, BMI shows the highest point estimate (OR: BMI > 40 compared to ref. = 3.6993), but other factors such as smoking, peripheral atherosclerosis, COPD and diabetes are also important in the development of DSWI.

Although a postoperative factor such as reoperation are statistically indistinguishable from BMI due to overlapping CI, practical considerations concerning reoperation may make BMI the superior choice for intervention.

5. Conclusion

The overall conclusion of the study is that the development of DSWI is multifactorial and pinpointing specific variables as the main cause is difficult. This study can point out areas that needs considerations in the quest to eliminate DSWI. Though some baseline variables such as diabetes, COPD and age cannot be changed, others such as BMI, arrhythmia and smoking, are factors that can be improved or prevented. Reductions in BMI could be a point of focus when trying to reduce the risk of infection.

Ethical statement

The regional ethics board in the regions of southern Denmark evaluated the study and found no approval necessary, because the data were drawn from a quality database.

Funding

This project did not receive any specific grant from funding agencies in the public, commercial, or not-for-profit sectors.

Declaration of competing interest

The authors declare that they have no known competing financial interests or personal relationships that could have appeared to influence the work reported in this paper.

References

- [1] C.A. Milano, K. Kesler, N. Archibald, D.J. Sexton, R.H. Jones, Mediastinitis after coronary artery bypass graft surgery: risk factors and long-term survival, *Circulation*. 92 (8) (1995) 2245–2251.
- [2] A.S. Omran, A. Karimi, S.H. Ahmadi, S. Davoodi, M. Marzban, N. Movahedi, et al., Superficial and deep sternal wound infection after more than 9000 coronary artery bypass graft (CABG): incidence, risk factors and mortality, *BMC Infect. Dis.* 7 (2007).
- [3] M. De Feo, A. Renzulli, G. Ismeno, R. Gregorio, A. Della Corte, R. Utili, et al., Variables predicting adverse outcome in patients with deep sternal wound infection, *Ann. Thorac. Surg.* 71 (1) (2001) 324–331.
- [4] F.D. Loop, B.W. Lytle, D.M. Cosgrove, S. Mahfood, M.C. McHenry, M. Goormastic, et al., Sternal wound complications after isolated coronary artery bypass grafting: early and late mortality, morbidity, and cost of care, *Ann. Thorac. Surg.* 49 (2) (1990) 179–187. Feb. Available from: <https://linkinghub.elsevier.com/retrieve/pii/000349759090136T>. Feb. Available from: .
- [5] R. Wouters, F. Wellens, H. Vanermen, R. De Geest, I. Degrieck, F. De Meerleer, Sternalitis and mediastinitis after coronary artery bypass grafting. Analysis of risk factors, *Texas Hear. Inst. J.* 21 (3) (1994) 183–188. Available from: <http://www.ncbi.nlm.nih.gov/pubmed/8000263>. Available from: .
- [6] A.A. Juhl, S. Hody, T.S. Videbaek, T.E. Damsgaard, P.H. Nielsen, Deep sternal wound infection after open-heart surgery: a 13-year single institution analysis, *Ann. Thorac. Cardiovasc. Surg.* 23 (2) (2017) 76–82. Available from: https://www.jstage.jst.go.jp/article/atcs/23/2/23_0a.16-00196/_article. Available from: .
- [7] R. Baillet, D. Cloutier, L. Montalin, L. Côté, F. Lellouche, C. Houde, et al., Impact of deep sternal wound infection management with vacuum-assisted closure therapy followed by sternal osteosynthesis: a 15-year review of 23 499 sternotomies, *Eur. J. Cardiothorac. Surg.* 37 (4) (2010) 880–887.
- [8] P. Munoz, A. Menasalvas, J.C.L.B. de Quiros, M. Desco, J.L. Vallejo, E. Bouza, Postsurgical Mediastinitis: a case-control study, *Clin. Infect. Dis.* 25 (5) (1997) 1060–1064. Nov. Available from: <https://doi.org/10.1086/516068>. Nov. Available from: .
- [9] E. Matros, S.F. Aranki, L.R. Bayer, S. McGurk, J. Neuwaldner, D.P. Orgill, Reduction in incidence of deep sternal wound infections: random or real? *J. Thorac. Cardiovasc. Surg.* 139 (3) (2010) 680–685.
- [10] L. Pan, R. Mo, Q. Zhou, D. Wang, Deep sternal wound infection after cardiac surgery in the Chinese population: a single-centre 15-year retrospective study, *J. Thorac. Dis.* 9 (9) (2017) 3031–3037. Sep. Available from: <http://jtd.amegroups.com/article/view/15342/12708>. Sep. Available from: .
- [11] F. Filsoofi, J.G. Castillo, P.B. Rahmadian, S.R. Broumand, G. Silway, A. Carpentier, et al., Epidemiology of deep sternal wound infection in cardiac surgery, *J. Cardiothorac. Vasc. Anesth.* 23 (4) (2009) 488–494. Aug. Available from: <https://linkinghub.elsevier.com/retrieve/pii/S1053077009000421>. Aug. Available from: .
- [12] W.J. Mauermann, P. Sampathkumar, R.L. Thompson, Sternal wound infections, *Best Pract. Res. Clin. Anaesthesiol.* 22 (3) (2008) 423–436.
- [13] P.J. Robinson, B. Billah, K. Leder, C.M. Reid, Factors associated with deep sternal wound infection and haemorrhage following cardiac surgery in Victoria, *Interact. Cardiovasc. Thorac. Surg.* 6 (2) (2006) 167–171. Dec 1. Available from: <https://doi.org/10.1510/icvts.2006.132191>. Dec 1. Available from: .
- [14] J. Lu, Risk factors for sternal wound infection and mid-term survival following coronary artery bypass surgery, *Eur. J. Cardio Thorac. Surg.* 23 (6) (2003) 943–949. Jun. Available from: [https://doi.org/10.1016/S1010-7940\(03\)00137-4](https://doi.org/10.1016/S1010-7940(03)00137-4). Jun. Available from: .
- [15] T.B. Ferguson, B.G. Hammill, E.D. Peterson, E.R. DeLong, F.L. Grover, A decade of change—risk profiles and outcomes for isolated coronary artery bypass grafting procedures, 1990–1999: a report from the STS National Database Committee and the Duke Clinical Research Institute, *Ann. Thorac. Surg.* 73 (2) (2002) 480–489. Feb. Available from: <https://linkinghub.elsevier.com/retrieve/pii/S0003497501033392>. Feb. Available from: .
- [16] L.A. Rasmussen, H.E. Bøtker, L.O. Jensen, J. Ravkilde, L. Riber, P.H. Nielsen, et al., Quality assurance of the Western Denmark Heart Registry, a population-based healthcare register, *Dan. Med. J.* 64 (10) (2017). Oct. Available from: <http://www.ncbi.nlm.nih.gov/pubmed/28975887>. Oct. Available from: .
- [17] J.B. Williams, B. Phillips-Bute, S.D. Bhattacharya, A.A. Shah, N.D. Andersen, B. Altintas, et al., Predictors of massive transfusion with thoracic aortic procedures involving deep hypothermic circulatory arrest, *J. Thorac. Cardiovasc. Surg.* 141 (5)

- (2011) 1283–1288. May. Available from: <https://linkinghub.elsevier.com/retrieve/pii/S002252231001175X>. May. Available from:.
- [18] K. Karkouti, R. O'Farrell, T.M. Yau, W.S. Beattie, Prediction of massive blood transfusion in cardiac surgery, *Can. J. Anesth.* 53 (8) (2006) 781–794. Aug. Available from: <https://doi.org/10.1007/BF03022795>. Aug. Available from:.
- [19] E.T. Martin, K.S. Kaye, C. Knott, H. Nguyen, M. Santarossa, R. Evans, et al., Diabetes and risk of surgical site infection: a systematic review and meta-analysis, *Infect. Control Hosp. Epidemiol.* 37 (1) (2016) 88–99. Jan 27. Available from: https://www.cambridge.org/core/product/identifier/S0899823X15002494/type/journal_article. Jan 27. Available from:.